

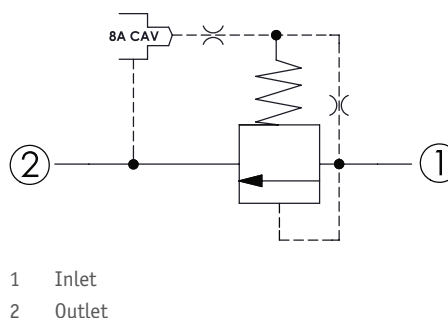
CRP-16A - Relief valve

Pilot operated, balanced piston relief main stage with integral 8A control cavity

1 Available versions

Ordering example:

CRP-16A	-20	-D	-8
Type	Operation	Spring	



Operation

Coding	Description
20	Port 1 to 2 (P to T)

Spring

Coding	Minimum control pressure	
	(bar)	(psi)
D	1.7	25
W	7	100

i INFORMATION

W spring is suit for higher pressure drop application. Please consult HAWE.

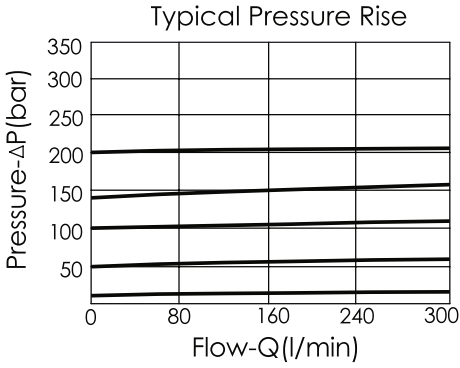
2 Technical data

Operating pressure p_{max}	350 bar
Flow rate Q_{max}	380 l/min
Installation torque	200 - 215 Nm
Cavity	T-16A
Weight	0.43 kg

i INFORMATION

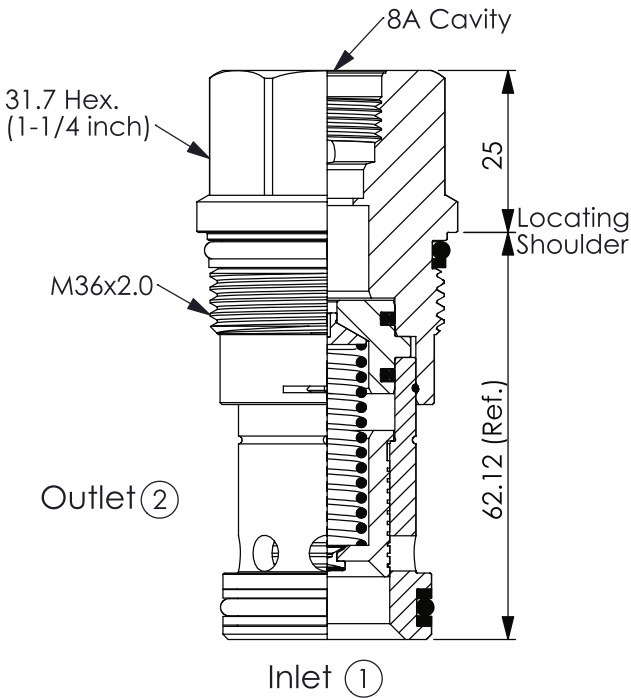
- Response time-typical (10 ms)
- Maximum leakage approximately (66 cm³/min/70 bar)
- Will accept maximum pressure at port 2; suitable for use in cross port relief circuits. If used in cross port relief circuits, consider spool leakage.

Characteristic lines



3 Dimensions

All dimensions in mm, subject to change.



4 Other information

see Technical information HAWE cartridge valves: D 8219

see Recommendation for hydraulic fluid: D 5488/1

HAWE Hydraulik SE

Einsteinring 17 | 85609 Aschheim/Munich | P.O. Box 11 55 | 85605 Aschheim | Germany
Phone +49 89 379100-1000 | info@hawe.de | www.hawe.com

